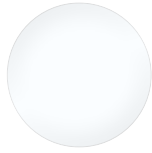


# NOVAFLEX SILICOTE

## Multi-Purpose Adhesive Sealant



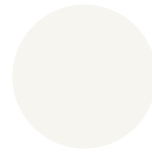
- Excellent adhesion
- Permanently flexible
- Extrudes to -20°F
- Adheres to:
  - Metals
  - Wood
  - Masonry
  - PVC
  - PVDF
  - Common Construction Materials



MX150  
TRANSLUCENT



MX101  
BLUE WHITE



MX104  
UP WHITE



MX100  
WHITE



MX105  
ANTIQUE WHITE



MX107  
CANVAS



MX143  
ALMOND



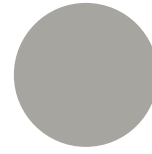
MX140  
BEIGE



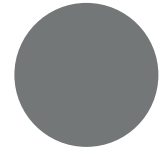
MX138  
DARK SAND



MX159  
LIMESTONE



MX111  
GRAY



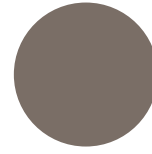
MX112  
DARK GRAY



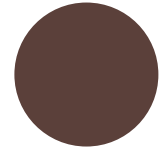
MX146  
SANDSTONE



MX141  
TAN



MX134  
TERRATONE



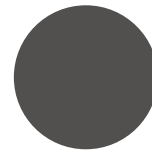
MX130  
IMPERIAL BRONZE



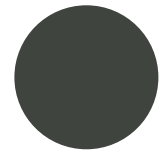
MX132  
EARTHTONE



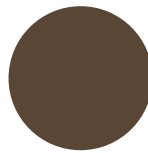
MX120  
DARK BRONZE



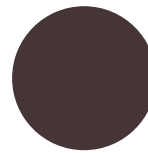
MX121  
LINCOLN BRONZE



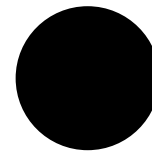
MX122  
BRONZE



MX193  
COCOA BEAN



MX194  
EXT BRONZE



MX110  
BLACK

Colors shown for illustrative purposes. Verify product color match before applying.



# Multi-Purpose Adhesive Sealant

## Product Specifications

Physical Property	Test Method	Performance Range Type I - Class 35	Performance Range Type II - Class 50
Appearance		Colored Paste	Colored Paste
Viscosity	Brookfield #7 @ 10 rpm	3500-7000 poises	4500-8000 poises
Extrusion Rate	1/8" Orifice @ 50 psi	30 - 80 grams/minute	30 - 80 grams/minute
Skin Over Time	3/8" @ 50% RH & 77°F	5 - 10 minutes	5 - 10 minutes
Through Cure	3/8" @ 50% RH & 77°F	48 hours	48 hours

## Typical Properties\*

Physical Property	Test Method	Typical Value Type I - Class 35	Typical Value Type II - Class 50
Specific Gravity		1.00 - 1.05	1.15 - 1.25
Tensile Strength	ASTM D412	140 - 200 psi	170 - 220 psi
Elongation	ASTM D412	500 - 650%	800 - 1000%
Tear Resistance	ASTM D624	30 - 35 pli	30 - 35 pli
Shore Hardness	ASTM D2240	20 +/- 5	25 +/- 5
Service Temperature		-40°F to 400°F (-40°C to 205°C)	-40°F to 400°F (-40°C to 205°C)
Joint Sealant Designation	ASTM C920	Type S Grade NS Class 35 Use NT, M, G, A, O	Type S Grade NS Class 50 Use NT, M, G, A, O
Adhesion	ASTM D903		
Glass		12 - 15 pli	12 - 15 pli
Aluminum		10 - 14 pli	10 - 14 pli
Vinyl		12 - 15 pli	12 - 15 pli

\*The values outlined reflect testing that was conducted under laboratory conditions, actual results may vary. The information provided in the above table is not intended for use in preparing specifications. Please consult manufacturer for additional information.

### Permanently Flexible

- Will not shrink or crack
- Waterproof
- Mold/Mildew resistant
- Invisible to UV light

### Interior and Exterior Applications

- Excellent adhesion to most building substrates
- Completely cured within 48 hours
- Will not sag or slump
- Tack-free in 10 minutes

### Easily Gunned at all Temperatures

- Weatherproof plastic cartridges with removable tips
- Excellent tooling properties

### VOC Compliant in all 50 States (Green Building Compliant)

- Low odor
- Solvent free

### AAMA Verified for Window Installs

- Will not freeze
- Available in all major siding, trim coil, window, and metal roof manufacturer colors
- 18 month shelf life

### Professional Grade



Sealants | Foams | Coatings | Thermals

5109 Hamilton Avenue  
Cleveland, OH 44114 USA  
(216) 881-8111 | (800) 380-0138  
(216) 881-6977 fax  
novagard.com

ISO 9001:2015 (QMS with Design)  
IATF 16949:2016 (QMS with Design)

NovaFlex is proudly made in Cleveland, OH  
Effective Date: May 2019-v1.9