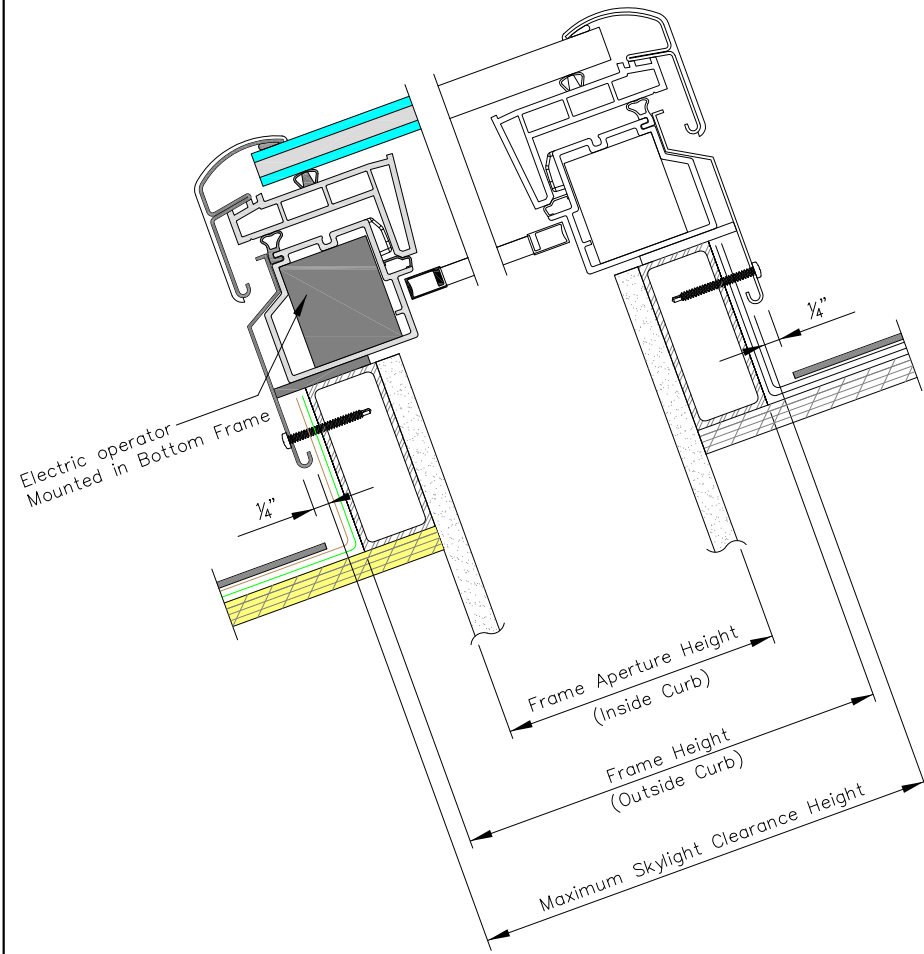
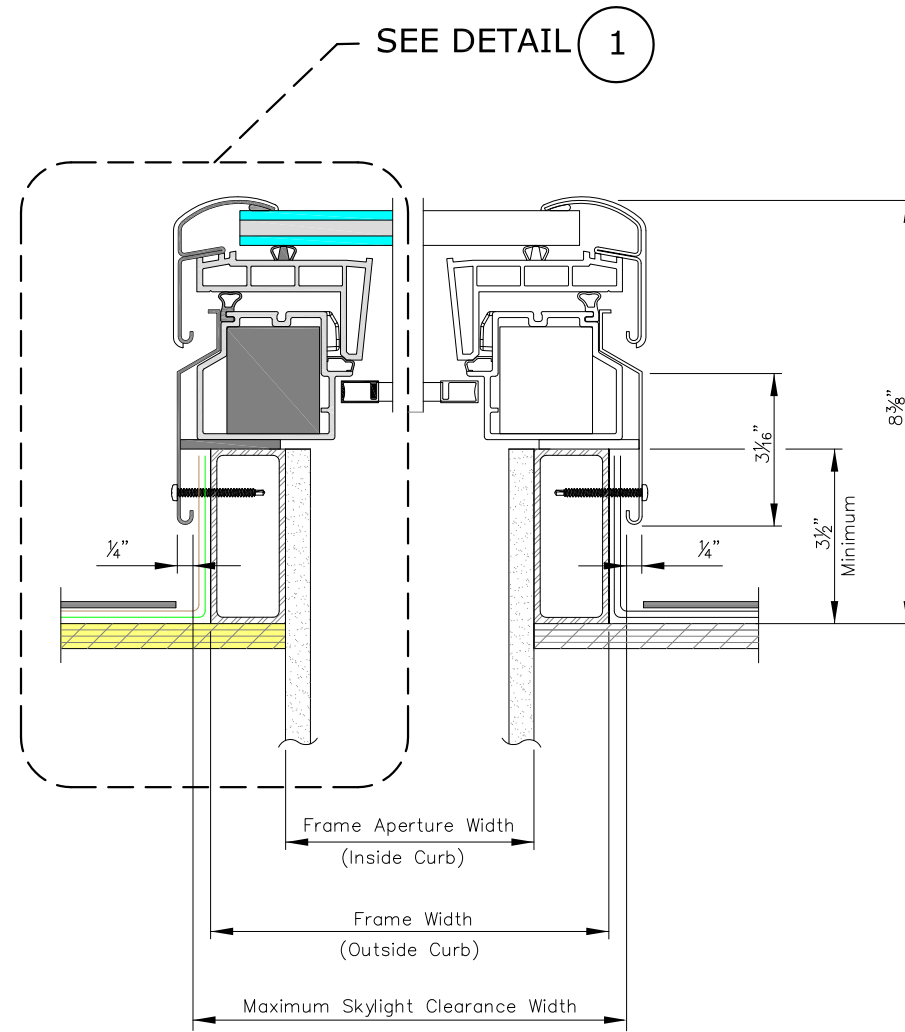




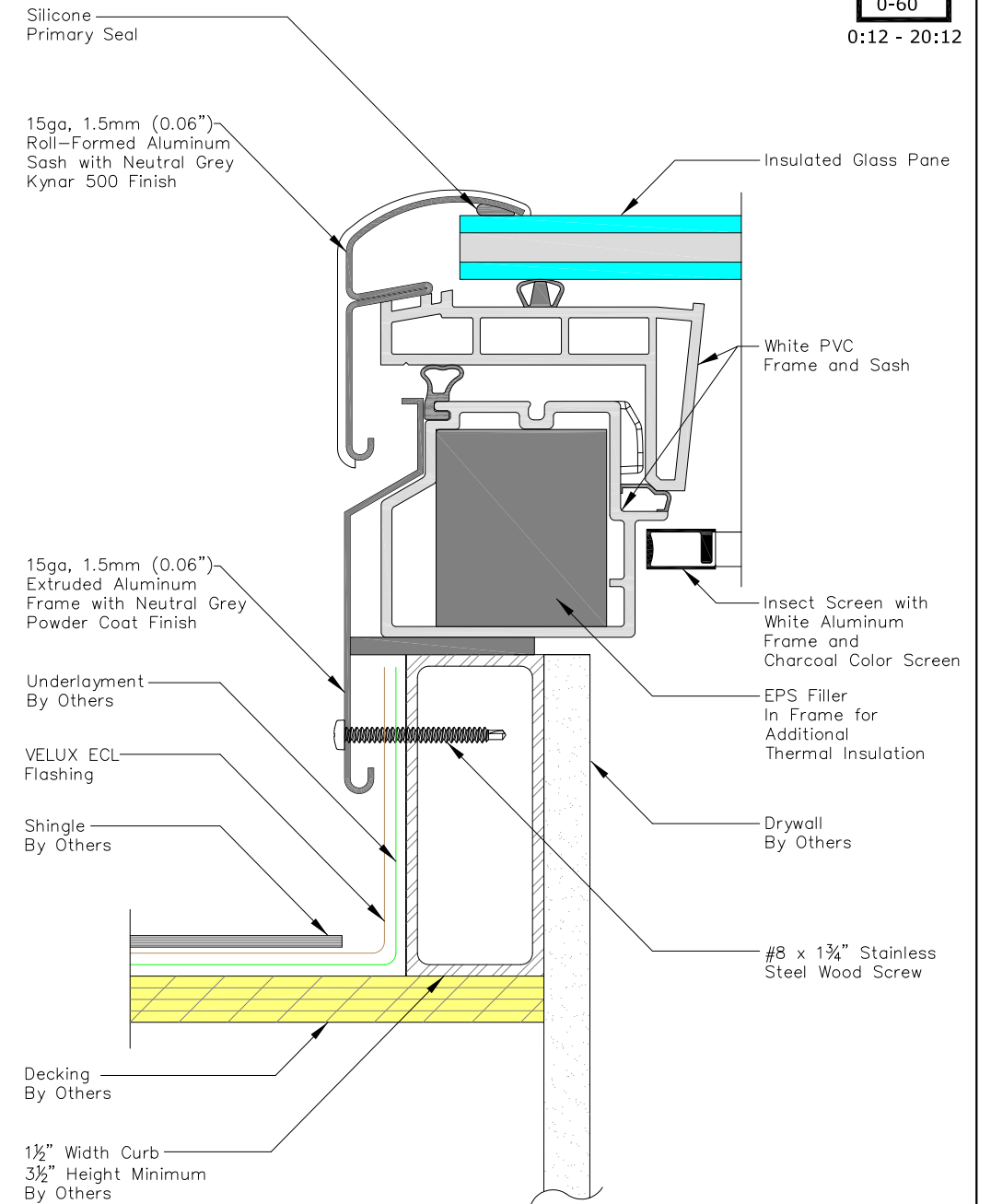
0:12 - 20:12



VERTICAL CROSS SECTION



HORIZONTAL CROSS SECTION



DETAIL 1


PRODUCT DIMENSIONS							
METRIC UNITS (MILLIMETERS)				IMPERIAL UNITS (INCHES)			
Size	Frame Width	Frame Aperture Width	Maximum Skylight Clearance Width	Frame Height	Frame Aperture Height	Maximum Skylight Clearance Height	Daylight Area* (Sq. Meters)
2222	648	572	675.3	648	572	675.3	0.24
2234	648	572	675.3	952	876	980	0.39
2246	648	572	675.3	1257	1181	1284.8	0.55
3030	851	775	878.4	851	775	878.4	0.49
3046	851	775	878.4	1257	1181	1284.8	0.77
3434	952	876	980	952	876	980	0.64
4646	1257	1181	1284.8	1257	1181	1284.8	1.22

NOTES:
1. Max sash opening is 11" by stainless steel chain.

- STANDARD GLAZING OPTIONS:**
- Laminated LowE3 (04)
 - Impact (06)
 - White Laminated (08)

- COMPATIBLE FLASHINGS:**
- ECL Step flashing
 - ECW Tile flashing

- ELECTRICAL/CONTROL DATA:**
- VCE Skylight controlled via 2.4 GHZ radio frequency KLR 200 remote control provided with skylight. Optional controls for VCE Skylight are KLI 110 Wall Mounted Keypad or KLF 100 Home Automation Integration Kit.
 - Electrical Operator 100-240V, 50-60 HZ, 18 WATTS



Sky-Global Product Management

VELUX
1418 Evans Pond Road
Greenwood, SC 29649
1-800-88-VELUX
www.VELUXUSA.com

VCE - Electric Venting Curb Mounted Skylight