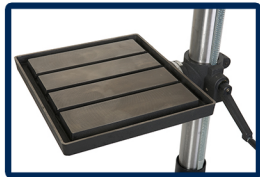




30-240 20" Floor Drill Press



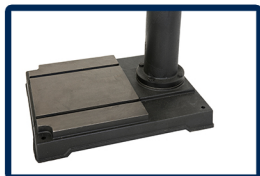
Twelve Available Spindle Speeds



16-1/2" x 18-3/4" Work Surface



3/4" Chuck



Sturdy Cast Iron Base



• SPECIFICATIONS

TYPE.....	FLOOR
MOTOR.....	1 HP, TEFC
AMPS.....	13.5
VOLTS.....	120V, 60 Hz
RPM.....	1,720
SWING.....	20"
CHUCK SIZE.....	3/4"
CHUCK TAPER.....	JT3
DRILLING CAPACITY.....	1"
SPINDLE TRAVEL.....	4-3/4"
SPINDLE TAPER.....	MT3
HEAD ROTATES.....	360°
SPEEDS.....	12
SPEED RANGE (RPM).....	180 - 3,865
QUILL DIAMETER.....	3"

• OVERALL

TABLE.....	16-1/2 x 18-3/4"
TABLE TILTS.....	45°
TABLE ROTATES.....	360°
MAXIMUM CHUCK TO TABLE.....	24-9/16"
MAXIMUM CHUCK TO BASE.....	43-13/16"
COLUMN DIAMETER.....	3-5/8"
HEIGHT.....	68"
BASE SIZE.....	22-3/4" x 16-1/2"
NET WEIGHT.....	250 LBS.
SHIPPING WEIGHT.....	260 LBS.
SHIPPING CARTON.....	57" x 25-1/2" x 12-1/4"
WARRANTY.....	5 YEARS