



30-230 17" Floor Drill Press



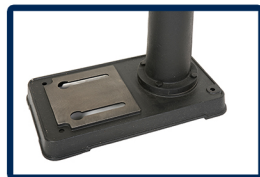
Sixteen Available Spindle Speeds



14" x 14" Work Surface



5/8" Chuck



Sturdy Cast Iron Base



• SPECIFICATIONS

TYPE.....	FLOOR
MOTOR.....	1 HP, TEFC, 120V, 60 Hz
SWING.....	17"
CHUCK SIZE.....	5/8"
DRILLING CAPACITY.....	1"
SPINDLE TRAVEL.....	3-1/8"
SPINDLE TAPER.....	MT3
HEAD ROTATES.....	360°
SPEEDS.....	16
SPEED RANGE (RPM).....	200 - 3,630
QUILL DIAMETER.....	3-1/8"

• OVERALL

TABLE.....	14" x 14"
TABLE TILTS.....	45°
TABLE ROTATES.....	360°
COLUMN DIAMETER.....	3-1/8"
HEIGHT.....	64-3/8"
BASE SIZE.....	17-1/2" x 22-1/2"
NET WEIGHT.....	188 LBS.
SHIPPING WEIGHT.....	198 LBS.
SHIPPING CARTON.....	55" x 21" x 9-1/2"
WARRANTY.....	5 YEARS