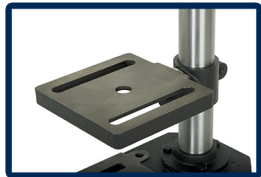




30-100 8" Benchtop Drill Press



Five Available Spindle Speeds



6-5/8" x 6-3/8" Work Surface



1/2" Chuck



Sturdy Cast Iron Base



• SPECIFICATIONS

TYPE.....	BENCH
MOTOR.....	1/3 HP, 120V, 60 Hz
SWING.....	8"
CHUCK SIZE.....	1/2"
DRILLING CAPACITY.....	1/2"
SPINDLE TRAVEL.....	2"
SPINDLE TAPER.....	JT33
SPEEDS.....	5
SPEED RANGE (RPM).....	620 - 3,100
QUILL DIAMETER.....	1-1/2"

• OVERALL

TABLE.....	6-5/8" x 6-3/8"
TABLE TILTS.....	45°
TABLE ROTATES.....	360°
COLUMN DIAMETER.....	1-7/8"
HEIGHT.....	22-3/4"
BASE SIZE.....	11" X 7-1/8"
NET WEIGHT.....	32 LBS.
SHIPPING WEIGHT.....	36 LBS.
SHIPPING CARTON.....	18" x 9-1/4" x 13-1/4"
WARRANTY.....	5 YEARS