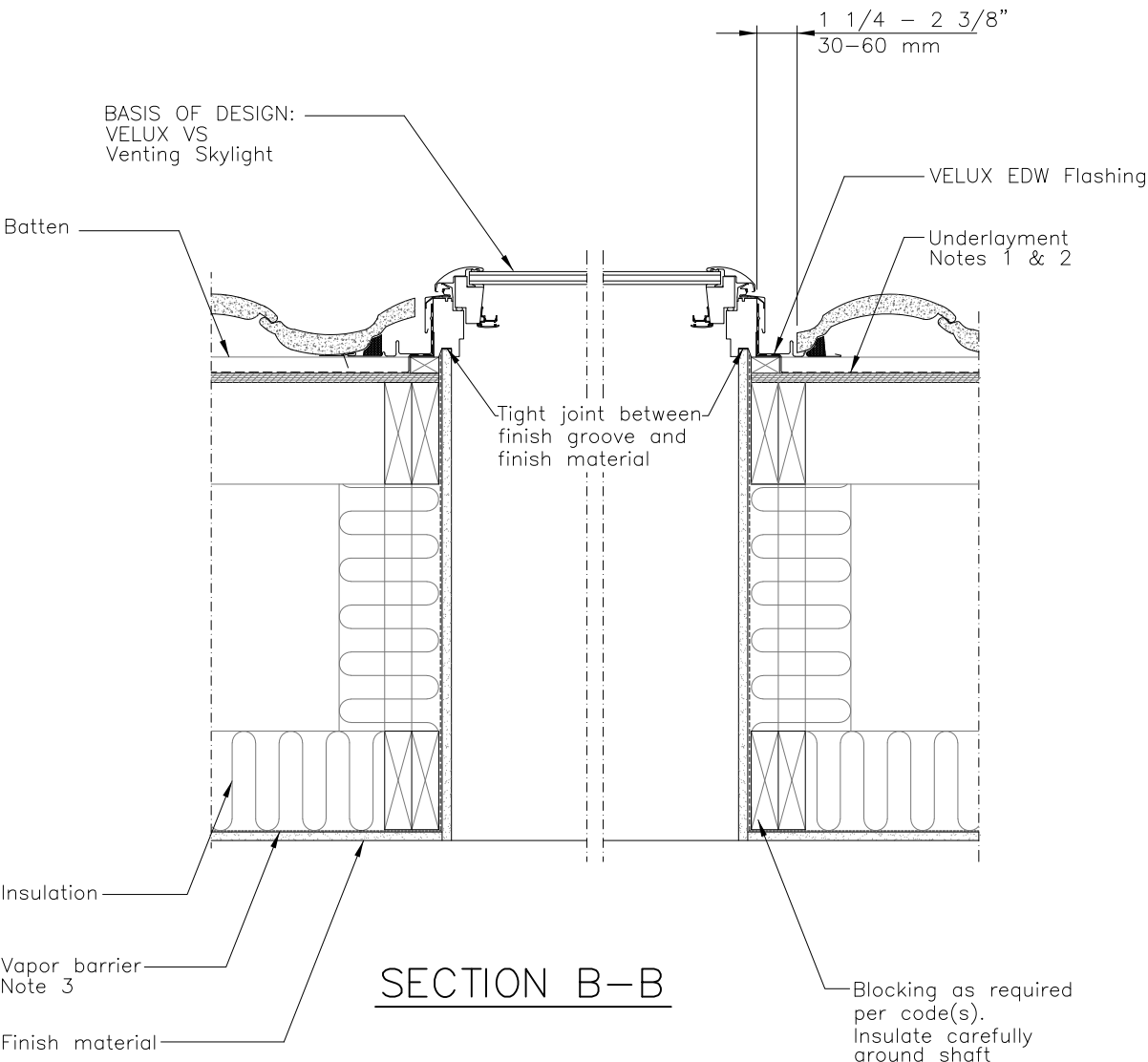
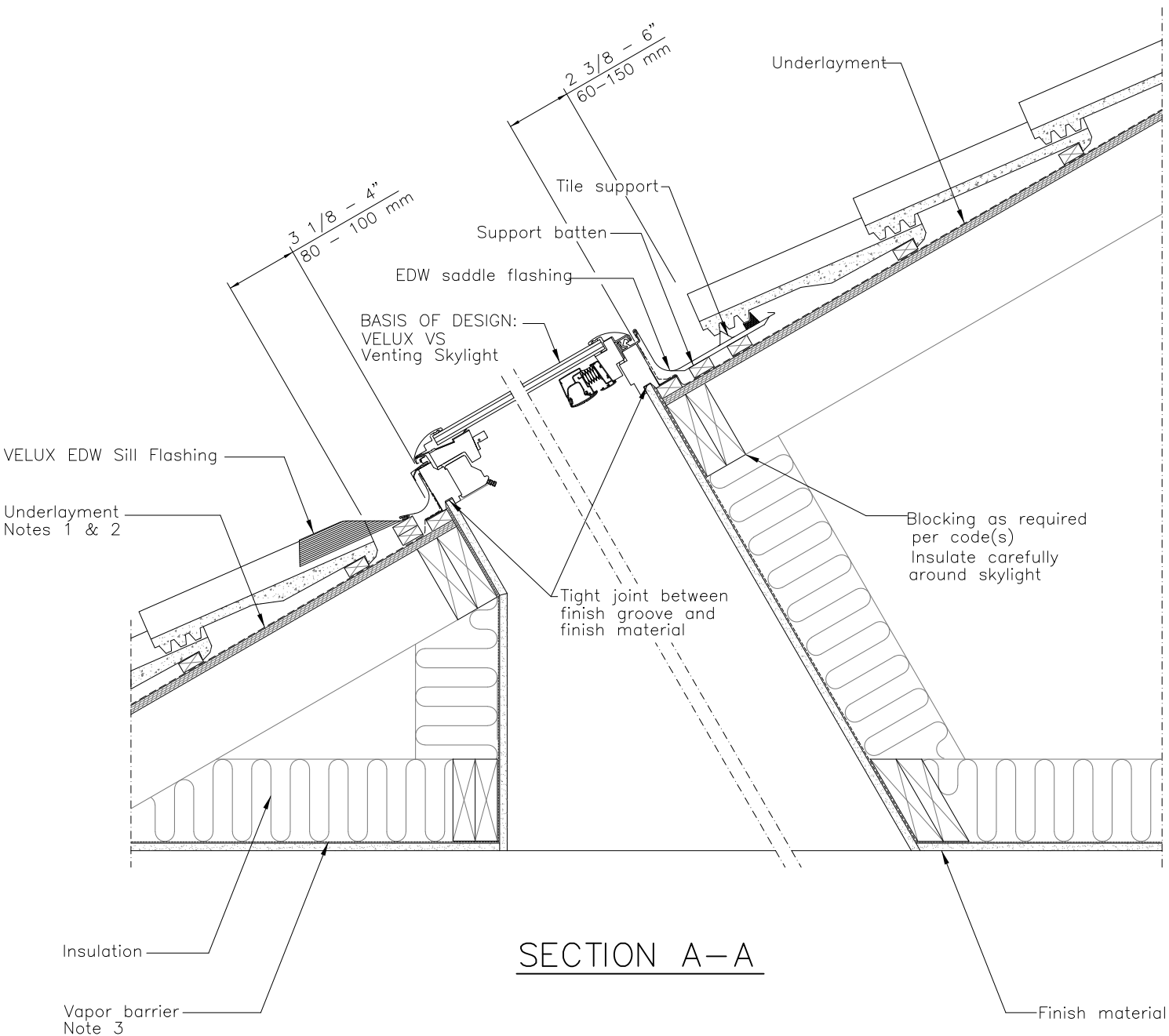


ELEVATION



SECTION B-B



SECTION A-A

GENERAL NOTES

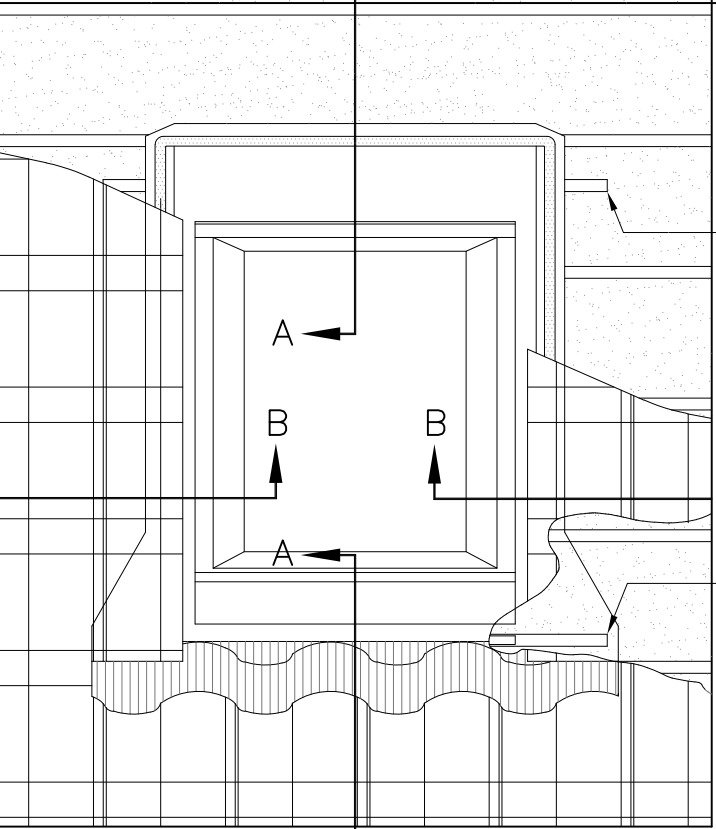
1. Wrap frame in adhesive underlayment provided with VELUX flashing. VELUX recommends use of VELUX type ZOZ 216 adhesive underlayment to wrap frame when not using VELUX flashings.
2. Underlayment to be folded up against all sides of frame.
3. Vapor barrier should be used to avoid moisture.



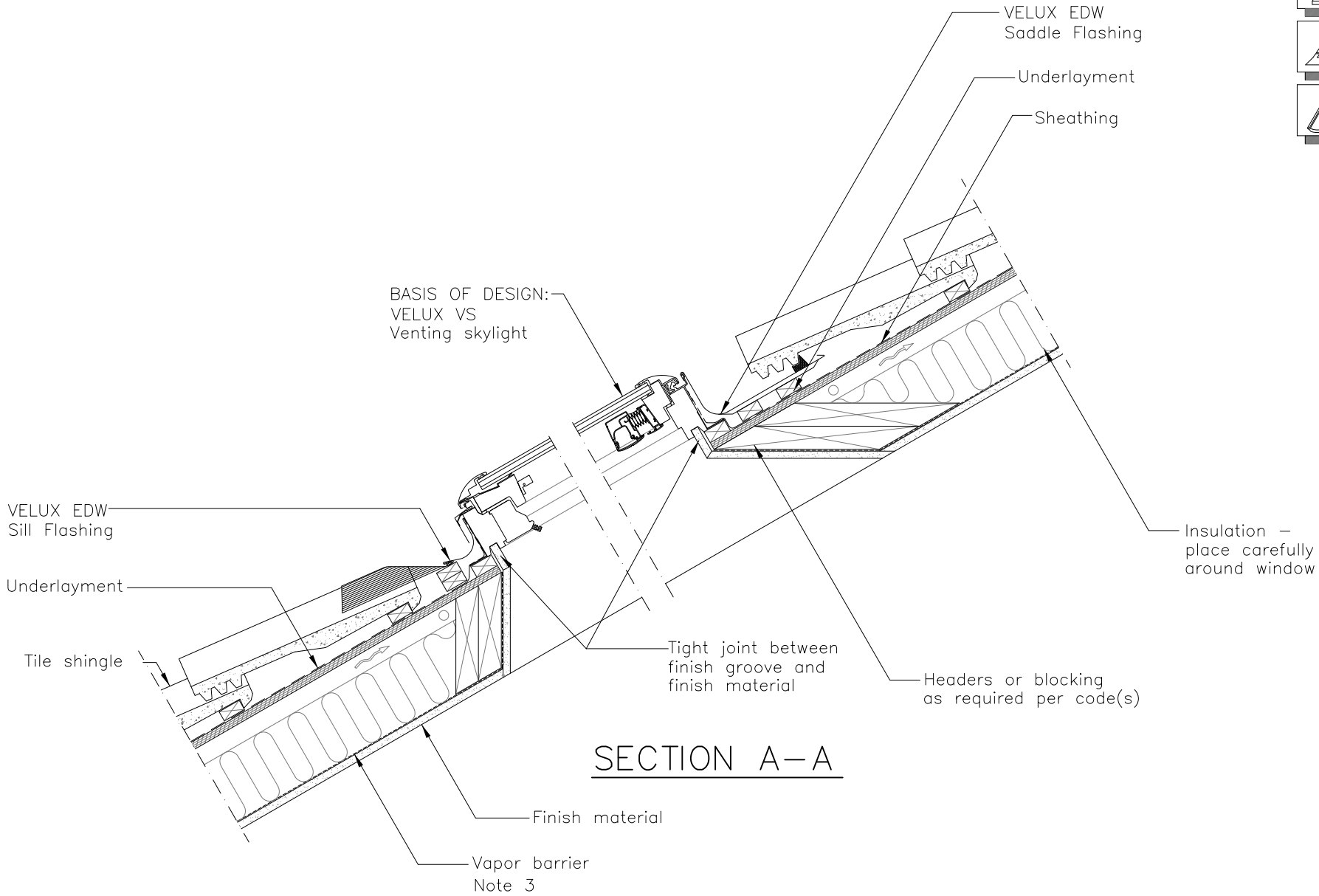
VELUX America LLC  
1418 Evans Pond Road  
Greenwood, SC 29646  
1-800-88-VELUX  
www.VELUXUSA.com

VS - Residential/Commercial Roof Section  
Light Shaft with Tile Shingles

CHECKED/DRAWN:  
CJ/RC  
DATE:  
01/15/2025

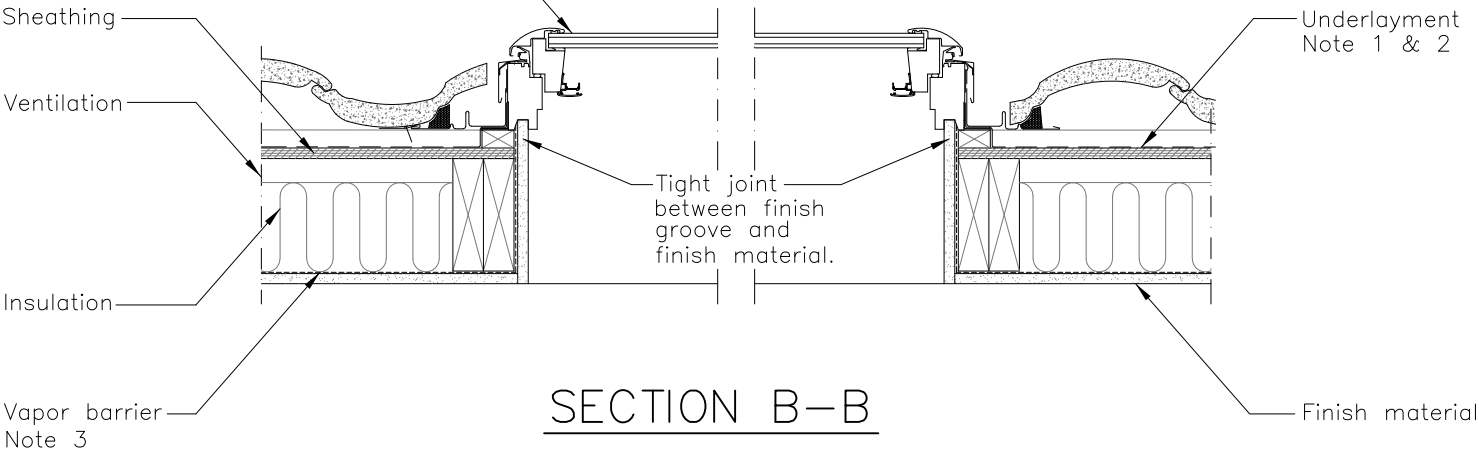


ELEVATION



SECTION A-A

BASIS OF DESIGN:  
VELUX VS  
Venting skylight



SECTION B-B

GENERAL NOTES

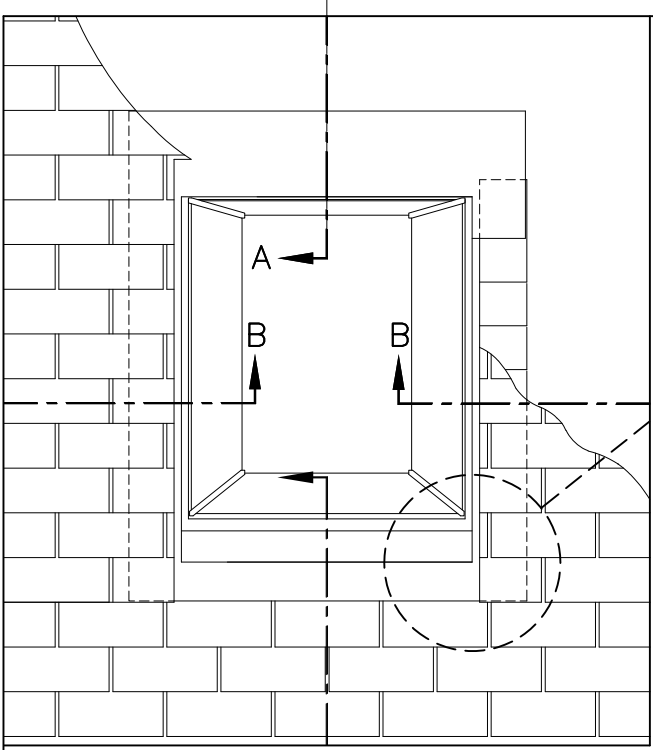
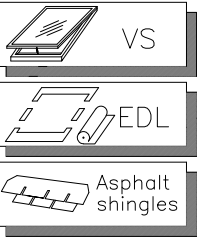
1. Wrap frame in adhesive underlayment provided with VELUX flashing. VELUX recommends use of VELUX type ZOZ 216 adhesive underlayment to wrap frame when not using VELUX flashings.
2. Underlayment to be folded up against all sides of frame.
3. Vapor barrier should be used to avoid moisture.



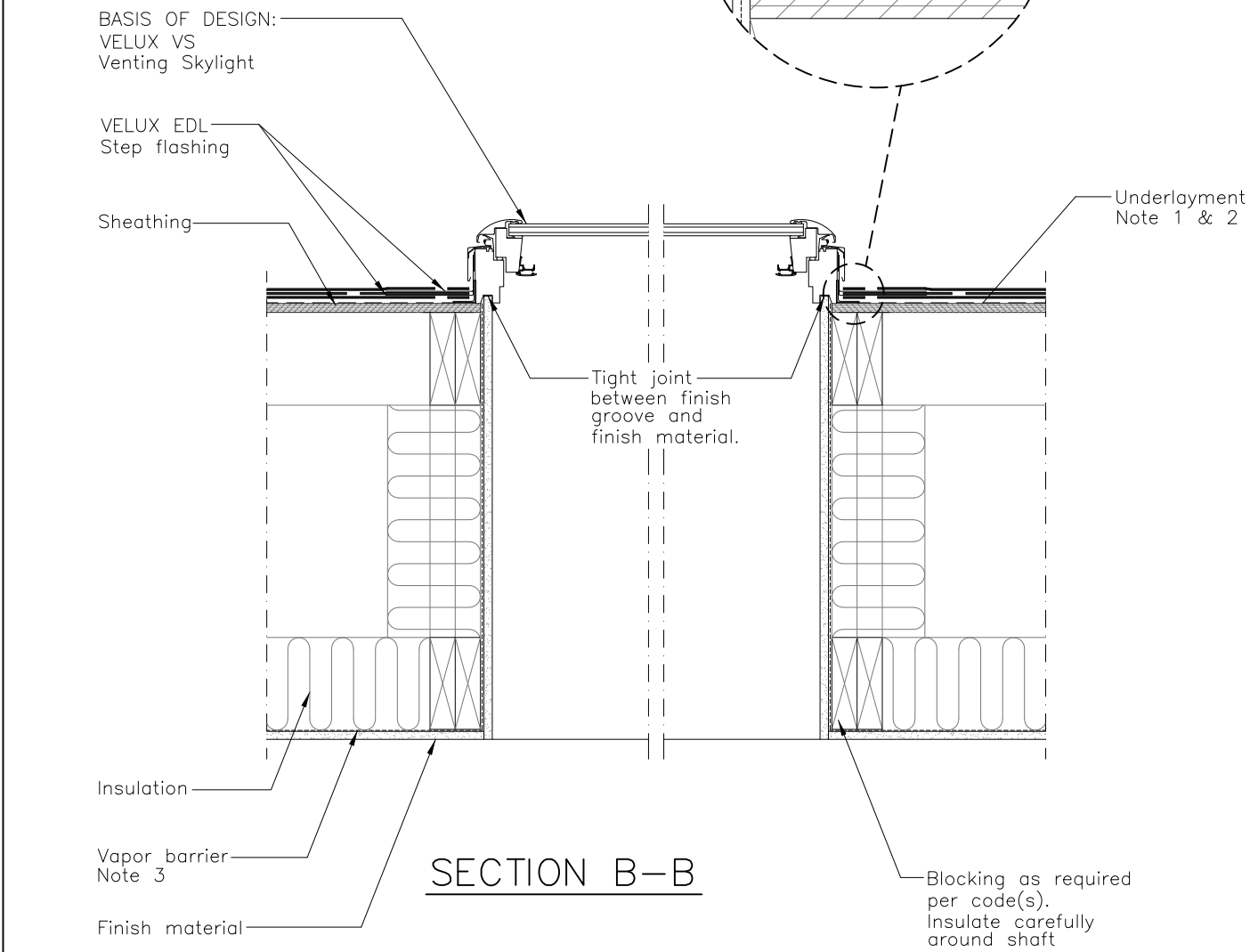
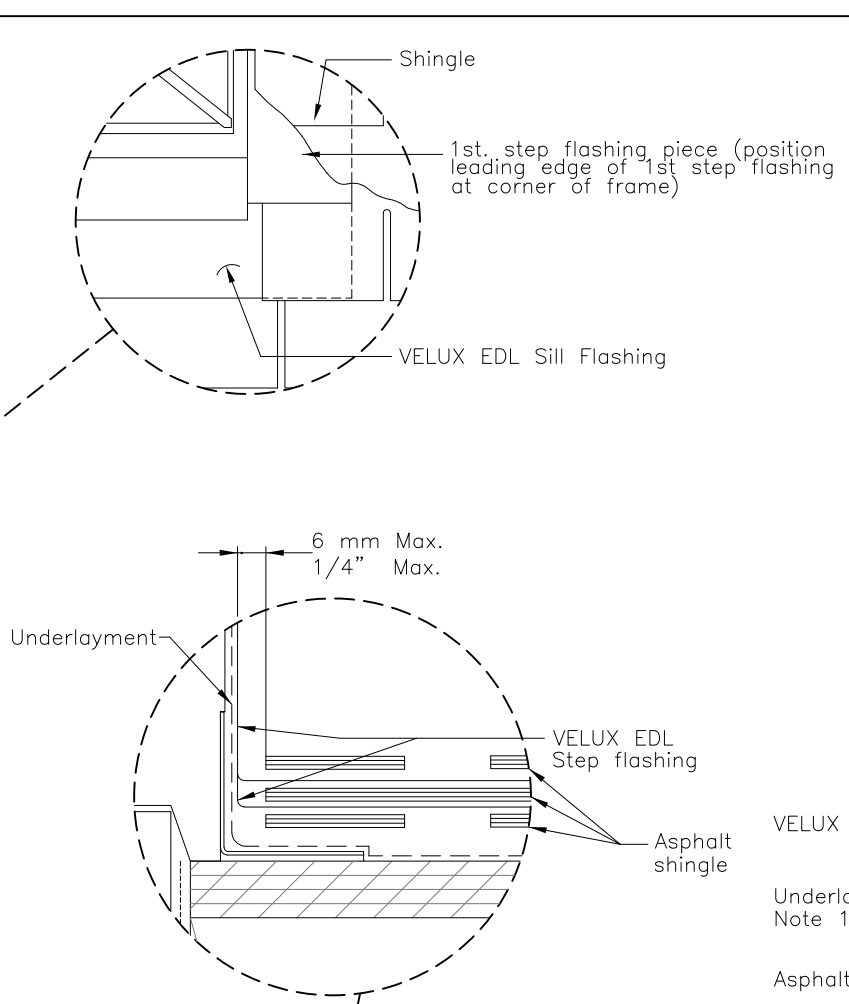
VELUX America LLC  
1418 Evans Pond Road  
Greenwood, SC 29646  
1-800-88-VELUX  
www.VELUXUSA.com

VS - Residential/Commercial Roof Section  
Cathedral Ceiling with Tile Shingles

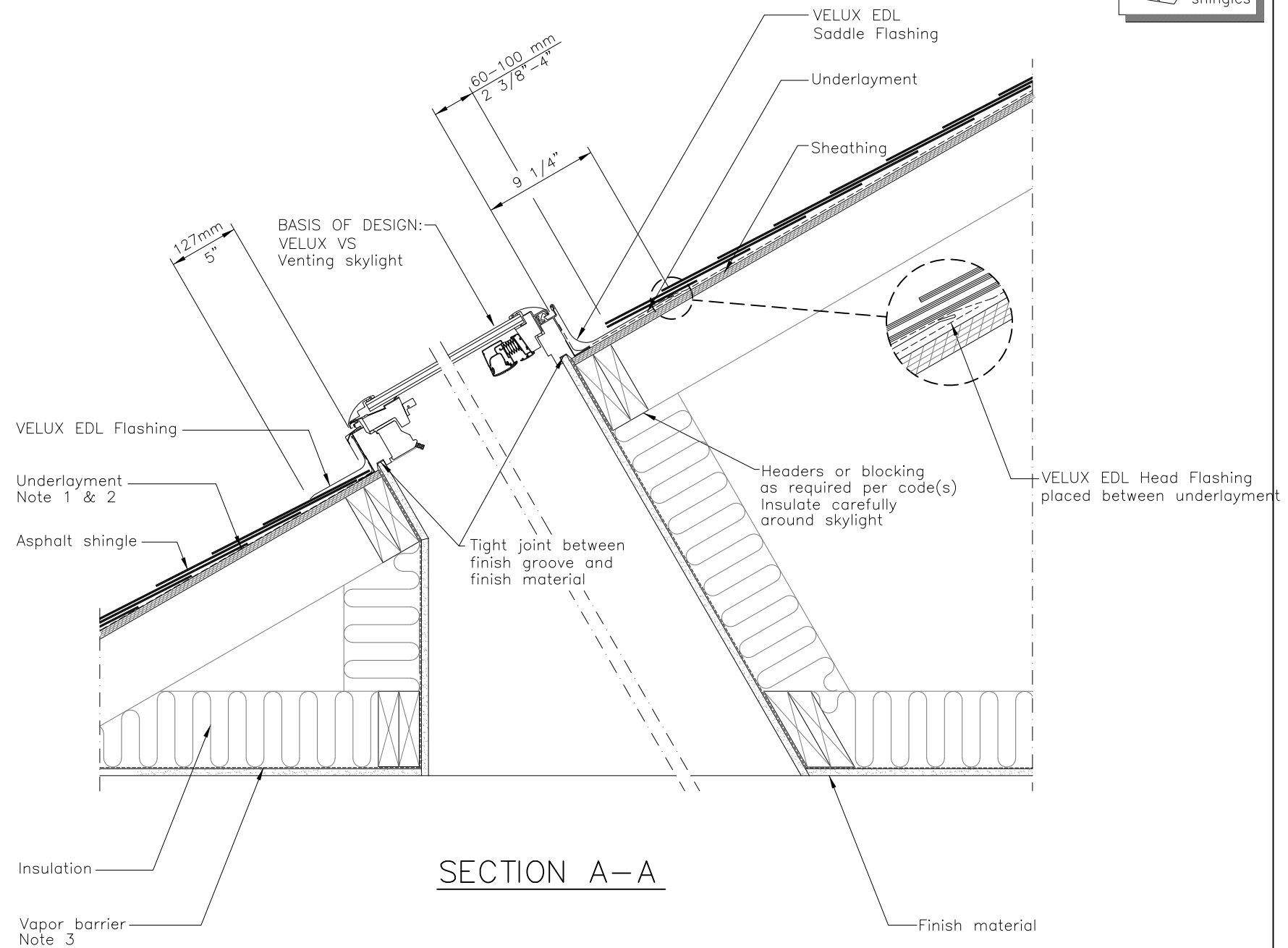
CHECKED/DRAWN:  
CJ/RC  
DATE:  
01/15/2025



ELEVATION



SECTION B-B



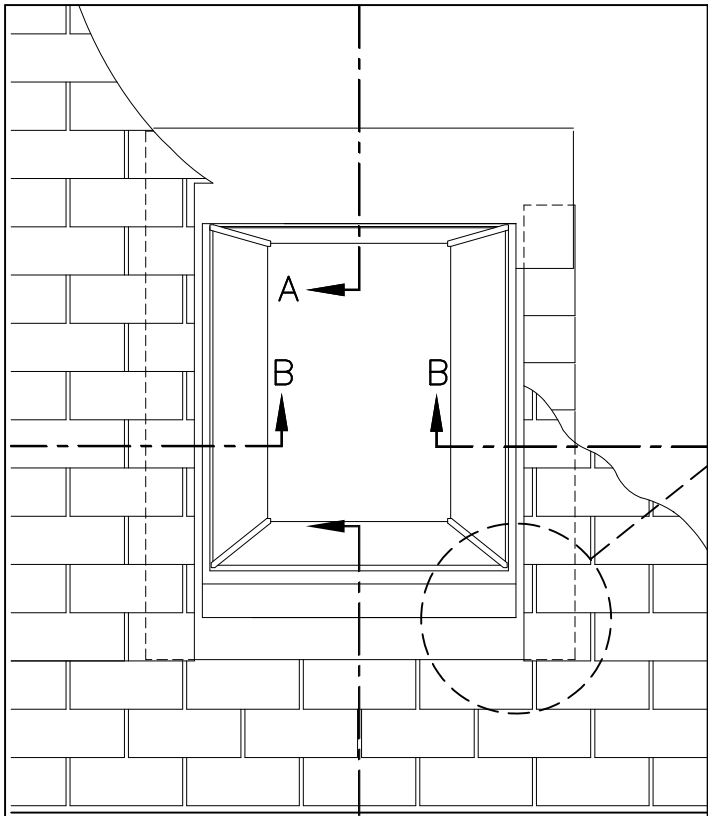
SECTION A-A

GENERAL NOTES

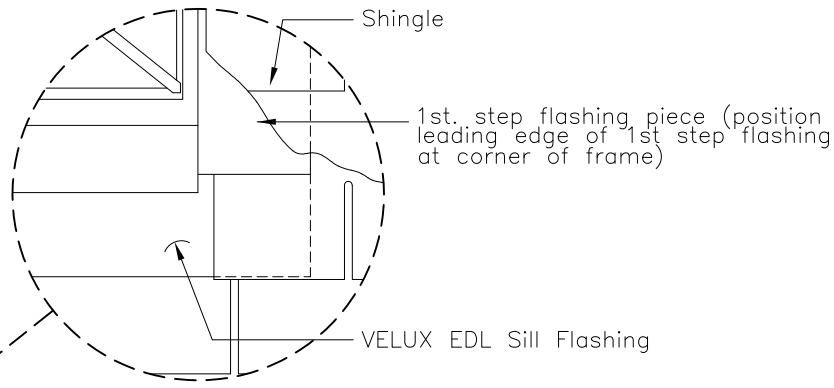
1. Wrap frame in adhesive underlayment provided with VELUX flashing. VELUX recommends use of VELUX type ZOZ 216 adhesive underlayment to wrap frame when not using VELUX flashings.
2. Underlayment to be folded up against all sides of frame.
3. Vapor barrier should be used to avoid moisture.



VELUX America LLC  
1418 Evans Pond Road  
Greenwood, SC 29646  
1-800-88-VELUX  
www.VELUXUSA.com



ELEVATION



Shingle

1st. step flashing piece (position leading edge of 1st step flashing at corner of frame)

VELUX EDL Sill Flashing

127mm  
5"

BASIS OF DESIGN:  
VELUX VS  
Venting skylight

60-100 mm  
2 3/8"-4"

9 1/4"

VELUX EDL  
Sill Flashing

Underlayment

Asphalt shingle

Tight joint between  
finish groove and  
finish material

Insulation –  
place carefully  
around window

VELUX EDL Head Flashing  
placed between underlayment

Headers or blocking  
as required per code(s)

SECTION A–A

Finish material

Vapor barrier  
Note 3

6 mm Max.  
1/4" Max.

Underlayment

VELUX EDL  
Step flashing

Asphalt  
shingle

BASIS OF DESIGN:  
VELUX VS  
Venting skylight

VELUX EDL  
Step flashing

Sheathing

Ventilation

Insulation

Vapor barrier  
Note 3

Tight joint  
between finish  
groove and  
finish material.

Underlayment  
Note 1 & 2

Finish material

SECTION B–B

## GENERAL NOTES

1. Wrap frame in adhesive underlayment provided with VELUX flashing. VELUX recommends use of VELUX type ZOZ 216 adhesive underlayment to wrap frame when not using VELUX flashings.
2. Underlayment to be folded up against all sides of frame.
3. Vapor barrier should be used to avoid moisture.

**VELUX**  
Sky-Global Product Management

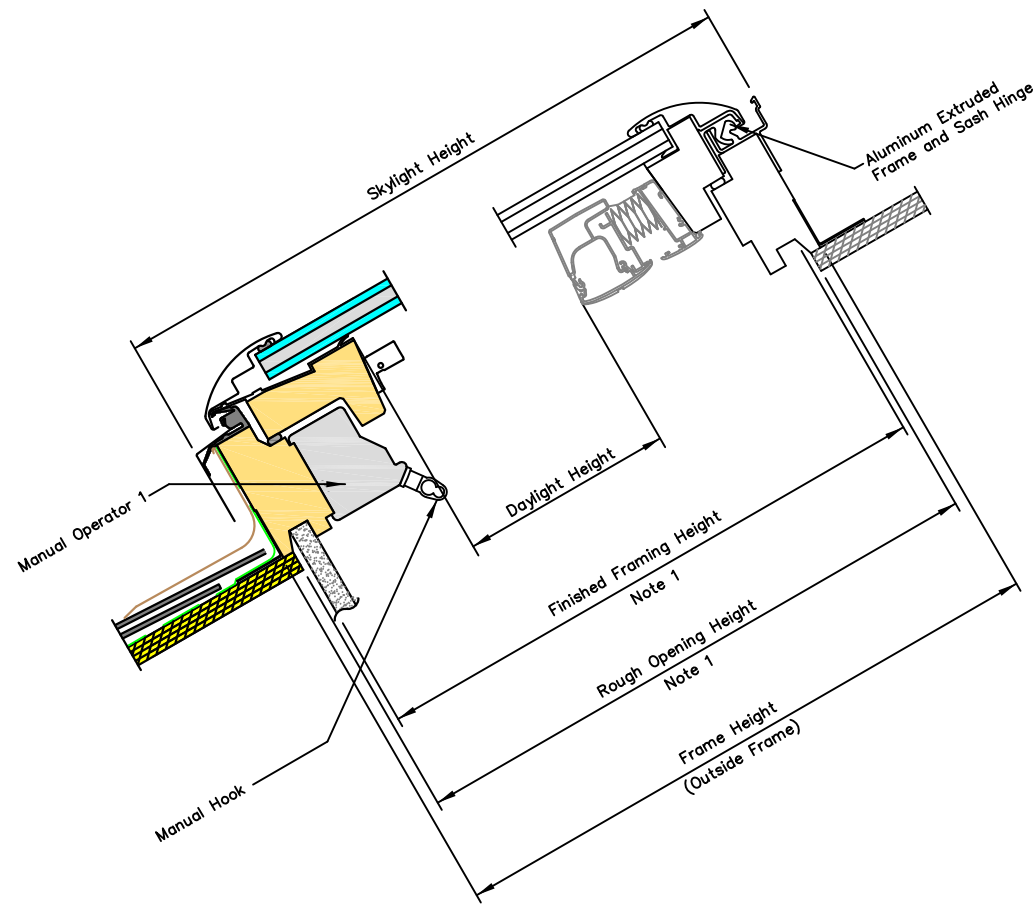
VELUX America LLC  
1418 Evans Pond Road  
Greenwood, SC 29646  
1-800-88-VELUX  
www.VELUXUSA.com

**VS - Residential/Commercial Roof Section  
Cathedral Ceiling with Asphalt Shingles**

CHECKED/DRAWN:  
CJ/RC  
DATE:  
01/15/2025

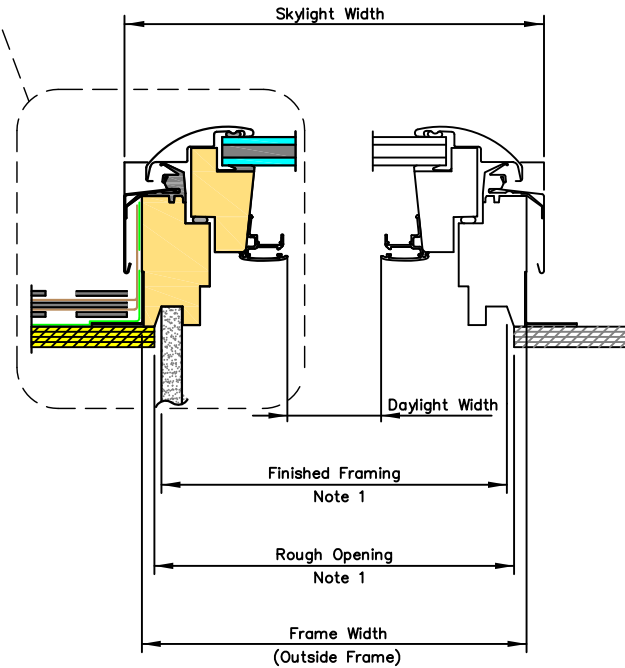
This drawing is an instrument of service and is provided for informational use only.



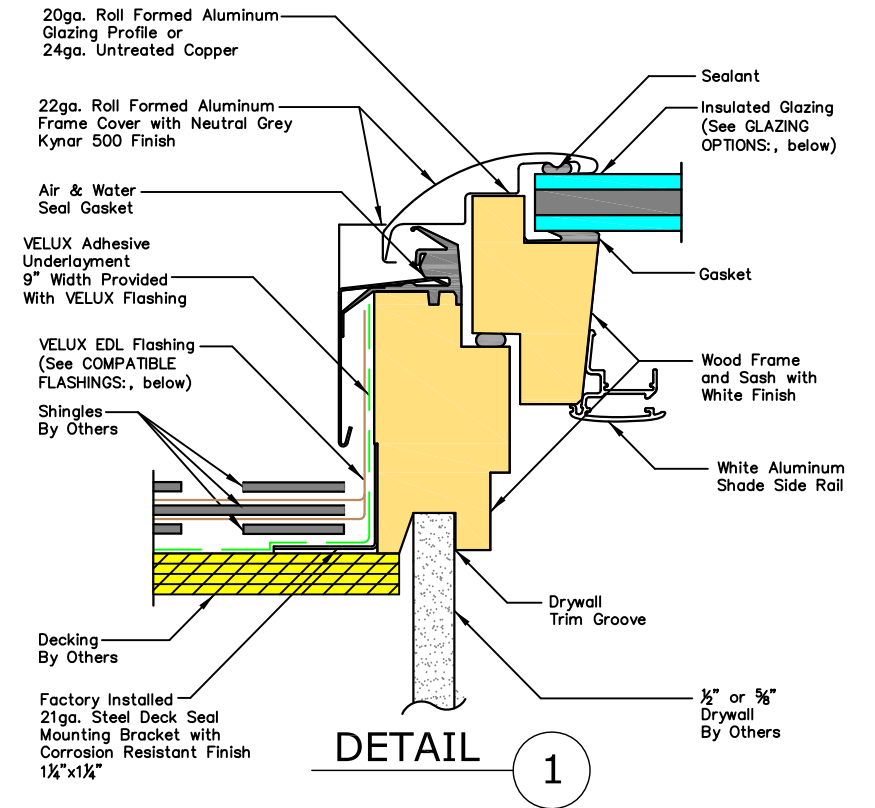


VERTICAL CROSS SECTION

SEE DETAIL 1



HORIZONTAL CROSS SECTION



PRODUCT DIMENSIONS										
IMPERIAL UNITS(INCHES)										
Size	Rough Opening Width	Frame Width	Skylight Width	Daylight Width	Rough Opening Height	Frame Height	Skylight Height	Daylight Height	Daylight Area (Sq. Feet)	Ventilation Area (Sq. Feet)
C01	21	21 1/2	22 5/16	14 1/2	26 7/8	27 3/8	28 3/8	17 7/16	1.76	2.60
C04	21	21 1/2	22 5/16	14 1/2	37 7/8	38 3/8	39 3/8	28 7/16	2.86	3.56
C06	21	21 1/2	22 5/16	14 1/2	45 3/4	46 1/4	47 1/4	36 5/16	3.66	4.14
C08	21	21 1/2	22 5/16	14 1/2	54 7/16	54 15/16	55 15/16	45	4.53	4.71
M04	30 1/16	30 9/16	31 3/8	23 9/16	37 7/8	38 3/8	39 3/8	28 7/16	4.65	4.17
M06	30 1/16	30 9/16	31 3/8	23 9/16	45 3/4	46 1/4	47 1/4	36 5/16	5.94	4.75
M08	30 1/16	30 9/16	31 3/8	23 9/16	54 7/16	54 15/16	55 15/16	45	7.36	5.32
S01	44 1/4	44 3/4	45 9/16	37 3/4	26 7/8	27 3/8	28 3/8	17 7/16	4.57	4.31
S06	44 1/4	44 3/4	45 9/16	37 3/4	45 3/4	46 1/4	47 1/4	36 5/16	9.51	5.84

- NOTES:**
- The ROUGH OPENING and FINISHED FRAMING dimensions are based on perpendicular interior finish material on all four sides and these dimensions will vary depending on the roof construction, the thickness and the design of the interior finish material.
  - Max sash opening is 11" by stainless steel chain.

**GLAZING OPTIONS:**

- Laminated LoE (04)
- Impact (06)
- Snowload (10)

\*Tempered Exterior Pane used with all options

**COMPATIBLE FLASHINGS:**

- EDL Step flashing
- EKL/EKX Combi flashing
- EDW Tile flashing
- EKW/EKX Combi tile flashing
- EDM Metal roof flashing
- ECB Counter flashing for curbs



VELUX America LLC  
1418 Evans Pond Road  
Greenwood, SC 29646  
1-800-88-VELUX  
www.VELUXUSA.com

VS - Manual Venting Deck Mounted Skylight System

CHECKED/DRAWN:  
CJ/RC  
DATE:  
01/15/2025

This drawing is an instrument of service and is provided for informational use only.