

# RIKON

## 12-1/2" x 20" VS MIDI LATHE 70-220VSR

### Quick Speed Changes

Easy access to your belt makes changing speeds a snap



### Indexing Head

Indexing head has 24 different positions



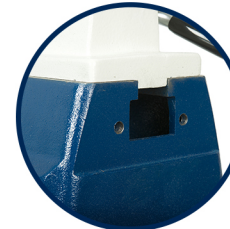
### Digital Display

Digital speed control with RPM display, forward/reverse and ON/OFF switches



### Machined End

Great for adding extensions for turning longer workpieces



- **Motor**
  - Horsepower.....1 HP TEFC
  - Amps.....6
  - Volts.....120V, 60 Hz
  - RPM.....2,900 RPM
  - Direction.....Forward / Reverse
- **Speeds**
  - Electronic Variable Speeds.....250 to 3,850
  - Ranges.....250 - 750, 550 - 1,650, 1,300 - 3,850
- **Swing**
  - Swing Over Bed.....12-1/2"
  - Swing Over Tool Rest.....9-5/8"
  - Working Distance Between Centers.....20"
  - Tool Rest Post Diameter.....1"
- **Headstock / Tailstock**
  - Spindle Nose Inch x TPI.....1" x 8"
  - Headstock Taper.....MT2
  - Tailstock Taper.....MT2
  - Ram Travel.....3-1/2"
  - Indexing Positions.....24

- **Overall**
  - Length.....40-3/4"
  - Width.....12"
  - Height.....17-5/8"
  - Base Size.....37-1/4" x 7-3/4"
  - Net Weight.....115 lbs.
  - Shipping Weight.....124 lbs.
  - Shipping Carton.....39" x 20-1/2" x 12-3/4"
  - Warranty.....5 Years

For more information or to find a distributor near you, please visit:

[www.rikontools.com](http://www.rikontools.com)





#### 70-901

24" Mini Lathe Bed Extension



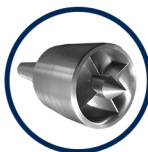
#### 70-920

Universal Midi and Mini Lathe Stand  
Adjusts from 23-1/4" to 37-1/4" Long  
and 24-1/2" to 34-1/2" Working Height.  
Length with Extension Added is 42" to 69-1/2"



#### 70-913

Mini Lathe Stand Extension  
The Mini Lathe Extension Works in  
Combination with all RIKON Lathe Stands  
and Bed Extensions



#### Badger Spur Center

70-940  
4 Sharp Driving Spurs Hold Spindles  
Safety Cover Retracts when Mounting Workpiece  
Workpiece can be Stopped for Inspection  
Spring Loaded Safety Guard and Center Point



#### 30-991

Drill Chuck and Arbor  
5/8" and Arbor MT2



#### Tool Rests

1" Post  
70-914 - 4" Tool Rest  
70-916 - 6" Tool Rest  
70-918 - 8" Tool Rest  
70-912 - 12" Tool Rest



#### Face Plates & Nylon Washer

70-933 - 3" Face Plate 1" x 8 TPI  
70-936 - 6" Face Plate 1" x 8 TPI  
70-992 - Nylon Washer (1-3/64" I.D. x 1-5/8" O.D.)



#### Spur Centers

70-943 - MT2 3-1/16" Long (Black)



#### Center Point HSS

70-948 for 70-943 and 70-945 (Black)