

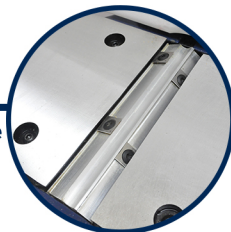
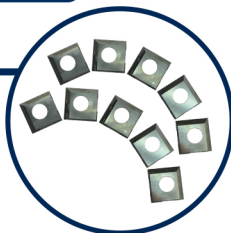
RIKON

6" BENCHTOP JOINTER

with Helical - Style Cutterhead 20-600H

Indexible Inserts

12 - 2 sided indexible HSS inserts



Helical-Style Cutterhead

Has 6 rows with 2 indexible HSS inserts per row

• Motor

Amps.....10
Volts.....120V, 60 Hz
Motor Speed (No Load).....20,000 RPM
Dust Port (O.D.).....2-1/2"

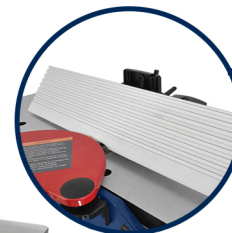
• Fence

Size.....19-3/4" x 4-3/8"
Tilt.....90° - 135°
Table (L X W).....30" x 6-3/16"



Large Fence

Large 19-3/4" x 4-3/8" fence adjusts 90° to 135°



Switch and Scale

Safety ON/OFF switch with locking key to prevent unauthorized use and an easy to read depth scale



• Cutterhead

Diameter.....2"
Speed.....12,000 RPM
Number of HSS Inserts (2 sided).....12
HSS Insert Size.....14.2mm x 14.2mm x 2mm
Number of Insert Rows.....6
Cuts Per Minute.....36,000 CPM
Maximum Depth of Cut.....1/8"
Maximum Cutting Width.....6"
Minimum Length of Stock.....10"
Minimum Width of Stock.....3/4"
Minimum Thickness of Stock.....1/2"
Table Size (2) (L x W).....14-3/8" x 6-3/16"
Dust Port (OD) Diameter.....2-1/2"
Dust Collection Minimum CFM.....100
Noise Level (No Load) at 3 Feet.....<100dB

• Overall

Height.....13"
Width.....17-1/2"
Length.....30"
Base Size.....19" x 9-3/8"
Net Weight.....36 lbs.
Shipping Weight.....41 lbs.
Shipping Carton.....31-1/2" x 12-1/2" x 11-1/8"
Warranty.....5 years

For more information or to find a distributor near you, please visit:

www.rikontools.com



RIKON

AVAILABLE ACCESSORIES

20-600H



12-201

LED Gooseneck Worklight
with Magnetic Base and
Magnetic Clip



25-410

Optional Planer Stand
Plywood/Wood Top Required
for Mounting Machine to Stand



25-499

Replacement 2 Sided
HSS Inserts
(10 Pack)



25-594

T25 Mounting Screws
for Inserts (10 Pack)



Shown with Optional Stand

25-410

For more information or to find a distributor near you, please visit:

www.rikontools.com